



HAPPY HOMES  
**TRIGUNA**  
live life as you dreamed



*A lifestyle to embrace for now and for ever...*

A Prestigious Project from **TRISHUL BUILDERS**

Luxury Apartments at **R.C Reddy layout**  
**Neeladrinagar, Electronic City Phase 1, BANGALORE**

## To live a life that is Perfectly Integrated...

Happy Homes Triguna is a magnificent edifice in the elite neighbour hood. It offers you a excellent 2 bedroom flats effuse with most modern facilities for a luxurious modern lifestyle. Perfectly designed apartments with quality construction to ensure plenty of natural light, fresh air. We have ensured that your new home is exactly what you dreamed about so often... Residential colonies, shopping malls, schools, colleges and hospitals are near by to this project. It has all the element to give you a grand lifestyle and quality living.



**2 BHK Flat**  
**Total Area : 1100 sft**  
**Facing : North Facing**



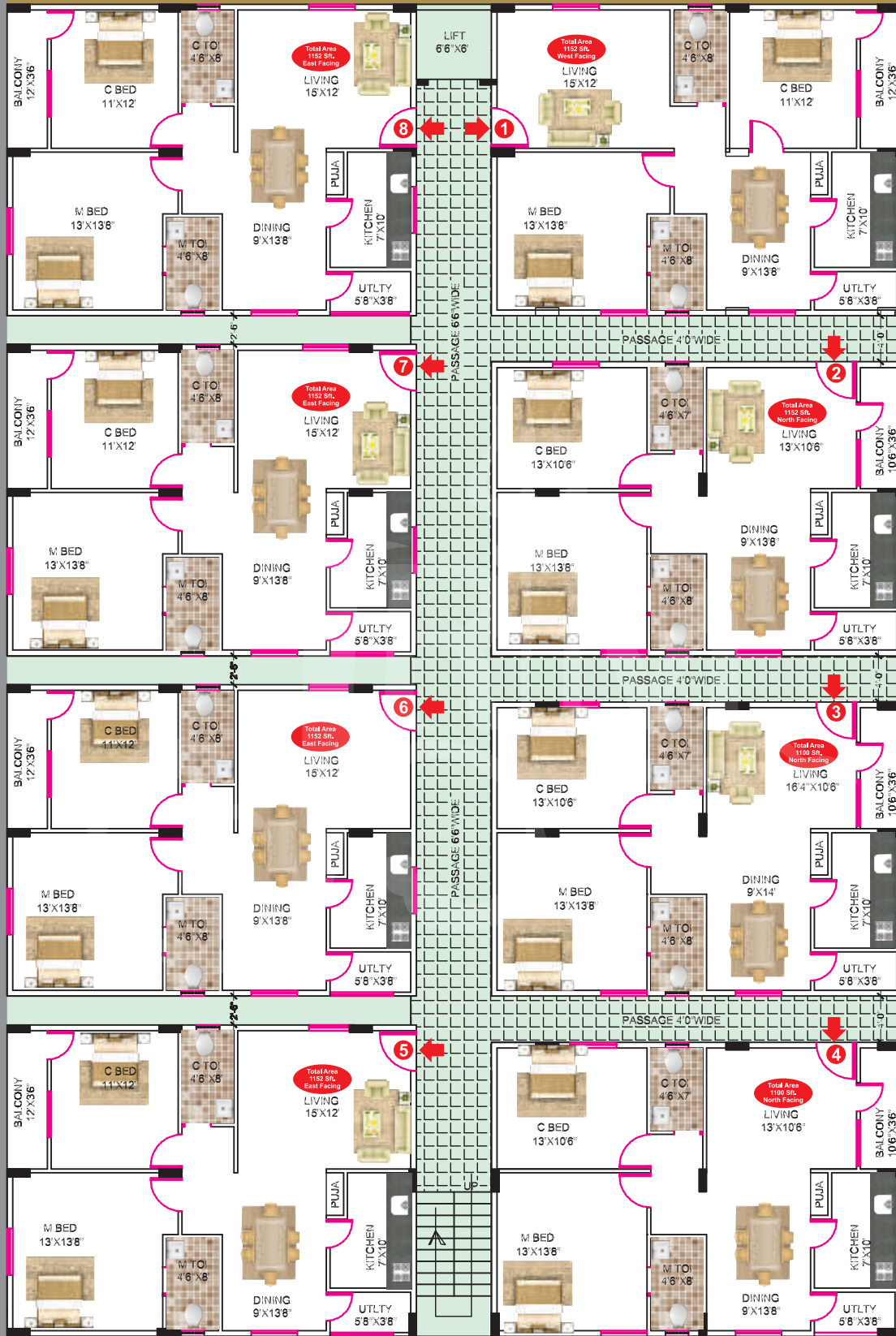
**2 BHK Flat**  
**Total Area : 1152 sft**  
**Facing : West Facing**

# " A LAVISH PROJECT INSIDE GATED R.C REDDY LAYOUT WITH MORE AMENITIES"

80'-0"

WEST BY ROAD

EAST BY ROAD



SOUTH BY ROAD

## TYPICAL FLOOR PLAN

GROUND, FIRST, SECOND & THIRD FLOORS



# Amenities & Location Advantages

- ➔ Walkway/Jogging
- ➔ Seating Area
- ➔ Park
- ➔ Gym Room
- ➔ My Gate App
- ➔ Rain Water Harvesting
- ➔ Multi Purpose Hall
- ➔ Drinking Water Plant
- ➔ Kids Play Area
- ➔ CCTV Surveillance System
- ➔ Round the Clock Security
- ➔ Power Backup



Treamis World School 1km  
 St. Xavier School 1.5km  
 Serene International School 2.5km  
 IPL Montessori School 3km  
 Vibgor International school 3km

## SCHOOLS



Apollo 1.7km  
 Motherhood 2km  
 Cloudnine 1.5km  
 Sparsh Multi Speciality 1.5km

## HOSPITALS



Hosa Road 3.5km  
 Electronic city 4.5km  
 Konappana Agrahara 3.5km

## METRO STATION



## IT PARKS

Wipro 1.5km  
 Infosys 2km  
 HCL 5km  
 TCS 2.5km  
 CGI 2km  
 Velankani Tech Park 2.5km

## SHOPPING MALLS

Max 1.2km  
 West Sides 1.2km  
 Brandfactory 1.3km  
 Reliance Digital 1.5km  
 Hyper Supermarket 1.3km  
 Village Supermarket 1.5km

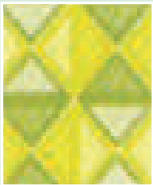
# SPECIFICATIONS



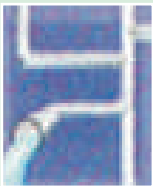
**STRUCTURE :**  
R.C.C Framed Structure.



**DOORS :**  
Main Door - Teak wood frame & shutter. Internal Doors - Masonite shutters with redsalwood frames.



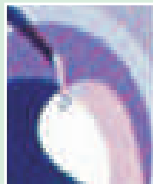
**FLOORING :**  
Vitrified tiles 2' 0" X 2' 0" size.



**WATER SUPPLY :**  
Borewell water Through overhead tank.



**GENERATOR :**  
Power backup for all flats, lifts, motors and common areas.



**PLASTERING :**  
Double coat sponge finish for external walls and (JK wall putty) for internal walls.



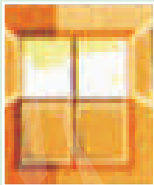
**KITCHEN :**  
Granite slab for platform with 2 fit glazed tiles dado and stainless steel sink.



**ELECTRICAL :**  
Havells / Great white or equivalent brand wiring and switches.



**SUPER STRUCTURE :**  
External walls 6" and Internal walls with 4" solid concrete blocks with C.M according to plan.



**WINDOWS :**  
Aluminium Windows with Mosquito Mesh with grill.



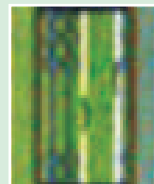
**TOILETS :**  
All toilets will consists of  
a) EWC with flush tank of Jaguar or equivalent brand.  
b) Hot and cold water mixer with overhead Shower.  
c) All C.P. Fittings and standard make.  
d) Provide 2 wash basins  
e) Anti skid tiles flooring and 7'0" height glazed tiles.



**PAINTING :**  
Premium Emulsion for internal walls, exterior Paints for external walls, enamel paint for wood, grills and main door fine finish polish.



**PARKING :**  
Parking will provided on payment of extra charge.



**ELEVATOR :**  
Standard make  
8 passenger capacity.



**NOTE :**  
Persons desire to alter/ modify their flat / premises shall inform the same before commencement of brick work. any work after brick work will be charged from the purchaser.



**EXTRA COST :**  
Registration charges, service charges, transformer charges, internet wall cable wiring, chajjas, deposits and surcharges will be extra as applicable.



**SECURITY :**  
24/7 Round the clock security with CCTV & Intercom.

# LOCATION MAP

Not to scale



## BUILDERS AND PROMOTERS

### TRISHUL BUILDERS

# 963, Happy Homes 1, 4th Cross, Neeladri Nagar,  
Electronic City Phase -1, Bangalore - 560100  
Ph. : +91 9900708600, 9900899007  
www.trishulbuilders.in, info@trishulbuilders.in

## ARCHITECTS & ENGINEERS

### SVS CONSULTANTS

Gottigere, Bangalore-560083  
Ph. : +91 97413 99374  
Email : sviconsultantsbng@gmail.com

Sri SV Graphics : +91 9705112116